



INSTALLATION INSTRUCTIONS

Part Number HU-1200

This filter fits: SEE CATALOG FOR CURRENT APPLICATIONS

Congratulations, you have purchased the finest air filter that money can buy. With proper care, this filter can last many seasons. This filter can be used in a stock machine, with no modifications required. If any engine modifications have been made tuning/jetting adjustments may be required. There are special installation instructions, so please follow the procedures outlined below to ensure the K&N Air Filter seals properly.

INSTALLATION

1. Remove the stock air filter, holder and guide. These items will not be reused.
2. Carefully clean the inside of the air box.
3. Apply the provided gasket into the base of the air box. (Fig. 1)
4. Install the K&N Air Filter into the air box. (Fig. 2)
Note: The notch on the K&N Air Filter will be at the top center of the air box. (Fig. 2)
5. Apply a small amount of sealing grease to the small diameter end of the provided spacer. (Fig. 3)
6. Install the spacer into the XStream Top. (Fig. 4)
7. Install the provided washers onto the stock wing bolt. The rubber washer will be against the XStream Top. (Fig. 5)
8. Install the XStream Top, spacer and wing bolt onto the K&N Air Filter. Do not completely seat the XStream Top. (Fig. 6)
Note: DO NOT apply sealing grease to the top of the K&N Air Filter. The XStream Top will not seal.
9. Start the wing bolt a couple of threads. Once the wing bolt has been started completely seat the XStream Top and tighten the wing bolt. **Note:** Do not over tighten the wing bolt or damage can occur to the K&N Air Filter.

THESE INSTRUCTIONS MUST BE FOLLOWED EVERY TIME THE FILTER IS SERVICED, OTHERWISE THE FILTER MAY NOT SEAL, AND DAMAGE TO THE ENGINE COULD RESULT.



Fig. 1

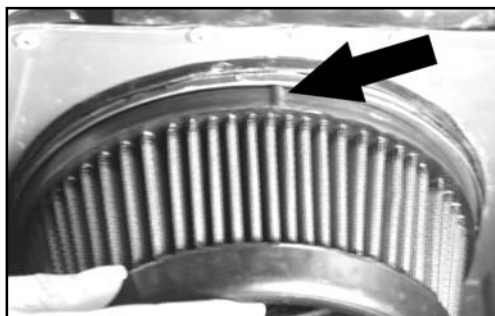


Fig. 2



Fig. 3



Fig. 4

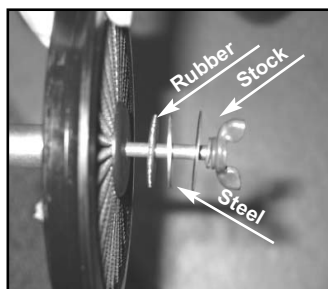


Fig. 5



Fig. 6