



INSTALLATION INSTRUCTIONS

Part Number: RK-3906, RK-3916, RK-3926

NOTE: C.A.R.B. E.O.# D-269-33  
applies to fuel injected models  
ONLY

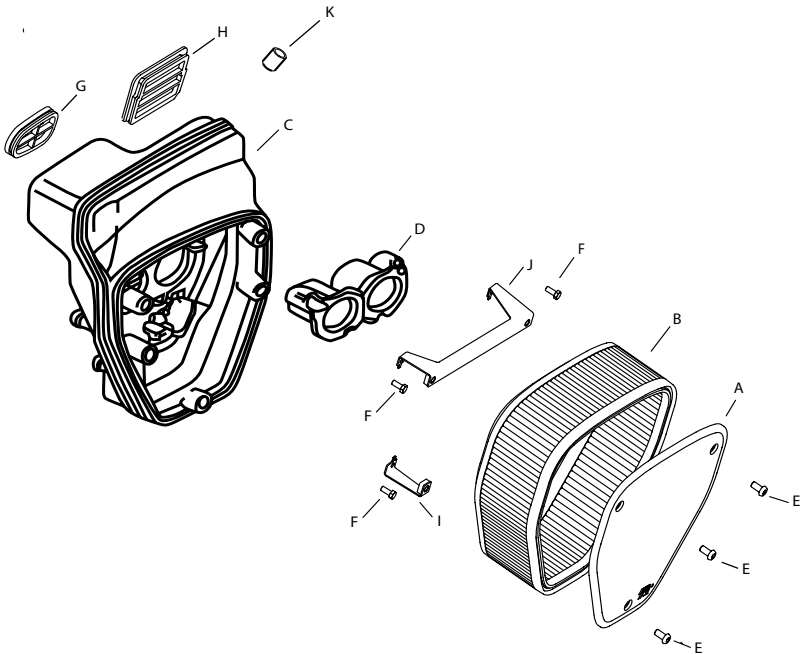
This filter fits: SEE CATALOG FOR CURRENT APPLICATIONS

Congratulations, you have purchased the finest Custom Air Cleaner that money can buy. With proper care, this assembly can last many seasons. This Custom Air Cleaner replaces the stock air cleaner assembly. The following procedure **MUST** be followed to ensure a proper fit and seal of the Custom Air Cleaner.

Parts List:

Description	Qty.
A Front Plate	1
B Air Filter Element	1
C Air Cleaner Housing	Stock
D Air Funnel	Stock
(KRK3906)	
E Bolt; M6x1.00x16MM Buttonhead	3
F Bolt; 5MM-.80 x 12MM HEX	3
G Small Plug	1
H Large Plug	1
I Small Bracket	1
J Long Bracket	1
(Not shown)	
Grease; 1 OZ	1
C.A.R.B Exemption Decal	1
K Caplug, 5/16" OD X 1/2" L, BLK	1

Products Sold Separately	Part Number
Replacement Air Filter	E-3016
Drycharger Wrap	E-3016DK



INSTALLATION:



1. Remove the seat bolts (one on each side)



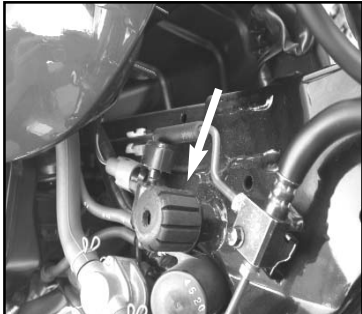
2. On models with optional solo rider rear carriers, remove the screws that hold the carrier to the rear fender. **NOTE:** Only remove the carrier if it interferes with removing the seat.



3. Remove the seat.



4. Remove the fuel tank hinge bolt.



5. Lift the fuel tank off of the tank cushions. **NOTE:** The fuel tank does not need to be completely removed, only tilt up for air cleaner housing removal.



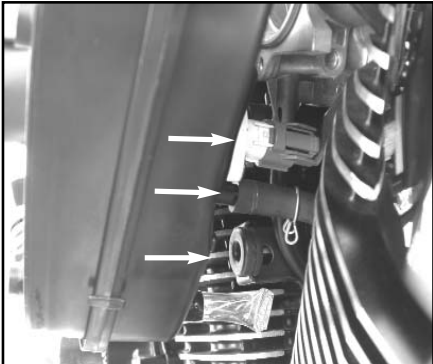
6. Remove the stock air cleaner cover.



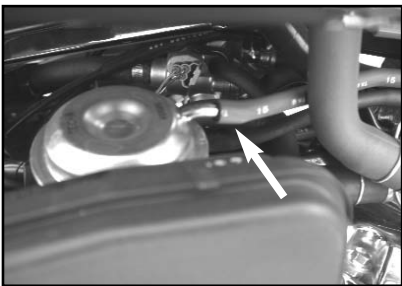
7. Remove the stock air filter.



8. Remove the four air funnel screws and remove the air funnel.



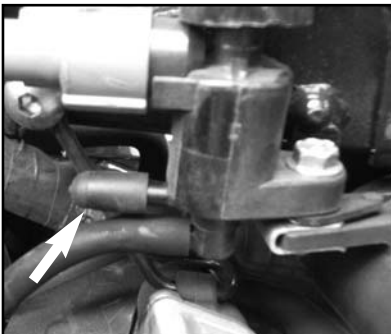
9. Gently pry the air cleaner housing from the mounting grommet. Disconnect the sensor and all of the breather tubes from the back of the air cleaner housing.



10. Disconnect the diaphragm hose.



11. Remove the diaphragm hose from the valve assembly.

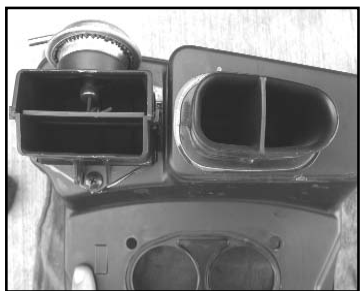


12. Install the provided plug on the valve assembly.





13. Remove the air cleaner housing.



14. Remove the duct screw. Gently pry the ducts off of the air cleaner housing.



15. Apply sealing grease into the groove of the small plug.



16. Install the small plug into the air cleaner housing



17. Apply sealing grease into the groove of the large plug.



18. Install the large plug into the air cleaner housing.



19. Clean the inside of the air cleaner housing.



20. Using the supplied Hex bolts, install the large and small brackets onto the air cleaner housing.

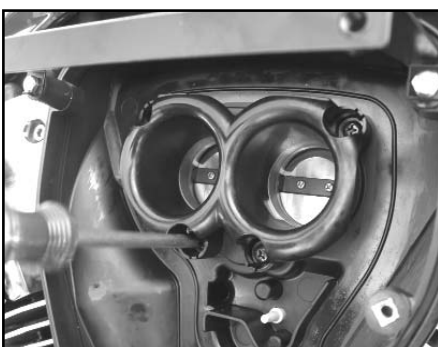


21. Make sure that a flat side of the Hex bolt is even with the tab on the bracket.



22. Bend the tab on the bracket up. This will keep the Hex bolt from backing out.

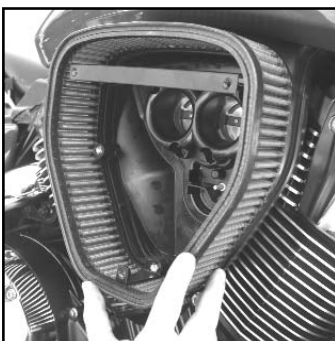
23. Reinstall the air cleaner housing on the bike.



24. Reinstall the air funnel and tighten the screws.

25. Reconnect the sensor and breather tubes that were removed from step 9.

**NOTE:** The diaphragm hose disconnected in step 10 will not be reconnected.



26. Install the K&N Filtercharger® onto the air cleaner housing. **NOTE:** Make sure that the air filter is completely seated in the groove of the air cleaner housing.



27. Install the front plate on the K&N Filtercharger®. **NOTE:** Make sure the front plate is completely seated onto the K&N Filtercharger®.

28. Using the provided Buttonhead bolts, tighten the front plate on the brackets from step 18.

29. Reinstall the fuel tank, seat and solo rider rear carrier in reversed order, steps 1 thru 5.

**30. The C.A.R.B Exemption Decal (attached) must be affixed near the tune up label so the RK Series Custom Air Cleaner can be verified as being street legal.**